

GLORY

Revolution  
Retail Systems

PARAGON™ SERIES



**Paragon 3SE/4SE - 3LW/4LW  
with Drop Vault**

# PARAGON™ SERIES



**Paragon 3SE/4SE with Drop Vault**



**Paragon 3LW/4LW with Drop Vault**

## **HARDWARE FEATURES:**

- Closed loop architecture of notes and coins; no manual intervention required
- Coin discrimination (i.e. counterfeit coin rejection)
- Scalable – up to two (2) note recyclers
- Lockable deposit cassette
- “Fitness sort” on recycled notes
- Flexible note orientation (no need to separate or face notes)
- Pocket note acceptor (handles large bundles of notes; up to 200)
- Integrated drop/storage vault – optional
- Dispenses coins directly into till tray – Paragon 3SE & 4SE
- Dispenses coins directly into till drawer – Paragon 3LW & 4LW
- Optional biometrics (fingerprint reader)
- Cup LEDs (notification if change is left in cups)
- Scalable platform
- Continuous 24/7 monitoring
- Integrated printer
- Vault - UL 291 business hours rated

## **FEATURE CAPABILITY:**

- Ability to integrate with pos system
- Same day credit on deposit (provisional credit)

## **ACCESS/CONTROL:**

- Drops can be made via a drop chute
- The drop vault is controlled by biometric access
- Till drawers, packages, or drops can be tracked by barcode scanner in conjunction with RRS Paragon Series

## **SOFTWARE FEATURES:**

- PCI compliant
- REACH™ remote monitoring solutions for tech support
- Real time cash/coin level monitoring
- Scalable – cluster format
- Reporting – standard or custom
- Lane and/or clerk accountability
- Tills and drop bags automatically traced to a specific user by utilizing bar-coding
- Multiple tills per register/lane
- Configurable user permission levels for machine access
- Multiple user authentication schemes (log-in and pin, or biometrics)
- Automatic prompting of periodic password changes
- Track monies outside of unit with external vault fund function
- Guided deposit preparation: automatically calculates and moves deposit to courier cassette
- Automatic end of day reporting
- Courier specific log-in menu
- Video troubleshooting tips
- Video guidance for system operation

## **DROP VAULT:**

- Height: 43.8” (1,112.5 mm)
- Width: 7.79” (197.8 mm)
- Weight: 225 lbs. (102 kg)
- Available volume: 1.83 ft<sup>3</sup> (0.1 m<sup>3</sup>)

## **UNIT WEIGHT:**

- Paragon 4: 1,000 lbs. (454 kg)
- SE: 900 lbs. (408 kg)
- Drop Vault: 225 lbs. (102 kg)

## **ELECTRICAL RATINGS:**

- 100-130 V
- 50/60 Hz
- 9A

**GLORY**

**Revolution**  
Retail Systems

# PARAGON™ SERIES

## SPECIFICATIONS

Physical Characteristics (nominal):	Paragon 3SE	Paragon 3LW	Paragon 4SE	Paragon 4LW
Height	48.78" (1,239.1 mm)	50.73" (1,288.5 mm)	48.78" (1,239.1 mm)	50.73" (1,288.5 mm)
Width	48.89" (1,241.7 mm)	59.15" (1,502.3 mm)	48.89" (1,241.7 mm)	59.15" (1,502.3 mm)
Depth (install depth)	36.64" (930.6 mm)	36.64" (930.6 mm)	36.64" (930.6 mm)	36.64" (930.6 mm)
Weight (empty)	2,200 lbs. (998 kg)	2,300 lbs. (1,043 kg)	2,200 lbs. (998 kg)	2,300 lbs. (1,043 kg)
Device Configuration:				
Number of Recycling Cassettes	3	3	4	4
Number of Deposit Cassettes	1	1	1	1
Notes:				
Capacity per Cassette (approximate):				
Recycle Cassette	2,700 notes	2,700 notes	2,700 notes	2,700 notes
Deposit Cassette	2,700 notes	2,700 notes	2,700 notes	2,700 notes
Total Capacity of Notes	10,800 notes	10,800 notes	13,500 notes	13,500 notes
Processing Speed In or Out (max)	8 notes/sec	8 notes/sec	8 notes/sec	8 notes/sec
Recycling Capability (max)	(3) denominations	(3) denominations	(4) denominations	(4) denominations
Coin (USD):				
Number of Recycle Modules	4	4	4	4
Hopper Capacity by Denomination (maximum):				
Pennies	4,300	10,000	4,300	10,000
Nickels	2,900	6,000	2,900	6,000
Dimes	6,100	13,500	6,100	13,500
Quarters	2,350	5,000	2,350	5,000
Fifty Cent Piece	20	200	20	200
Dollar	130	800	130	800
Sorted Overflow	---	24,000	---	24,000
Total Coin Capacity	15,800	59,500	15,800	59,500
Coin Processing Speed In (up to)	700 coin/min	3,000 coin/min	700 coin/min	3,000 coin/min
Coin processing Speed Out (up to)	16 coin/sec	32 coin/sec	16 coin/sec	32 coin/sec
Accepts Up To	(6) denominations	(6) denominations	(6) denominations	(6) denominations
Recycles Up To	(4) denominations	(4) denominations	(4) denominations	(4) denominations

GLORY

Revolution  
Retail Systems

# PARAGON™ SERIES

Coin (CAD):	Paragon 3SE	Paragon 3LW	Paragon 4SE	Paragon 4LW
Number of Recycle Modules	4	4	4	4
Hopper Capacity by Denomination (maximum):				
Nickels	3,000	6,500	3,000	6,500
Dimes	6,200	15,000	6,200	15,000
Quarters	2,700	5,800	2,700	5,800
\$1 Dollars	1,800	2,050	1,800	2,050
\$2 Dollars	1,700	1,900	1,700	1,900
Sorted Overflow	-	24,000	-	24,000
Total Coin Capacity	15,400	55,250	15,400	55,250
Coin Processing Speed In (up to)	700 coin/min	3,000 coin/min	700 coin/min	3,000 coin/min
Coin processing Speed Out (up to)	16 coin/sec	32 coin/sec	16 coin/sec	32 coin/sec
Accepts Up To	(5) denominations	(5) denominations	(5) denominations	(5) denominations
Recycles Up To	(5) denominations	(5) denominations	(5) denominations	(5) denominations

Note Recycler Capacity:					
Paragon 3 Note Recycler Capacity:	QTY	Bank Quality Note (Per cassette)	Street Quality Note (Per Cassette)	Total (Bank Quality Note)	Total (Street Quality Note)
Recycling Cassette	3	2,700	2,420	8,100	7,260
Deposit Cassette	1	2,700	2,420	2,700	2,420
Paragon 4 Note Recycler Capacity:	QTY	Bank Quality Note (Per cassette)	Street Quality Note (Per Cassette)	Total (Street Quality Note)	Total (Street Quality Note)
Recycling Cassette	4	2,700	2,420	10,800	9,680
Deposit Cassette	1	2,700	2,420	2,700	2,420

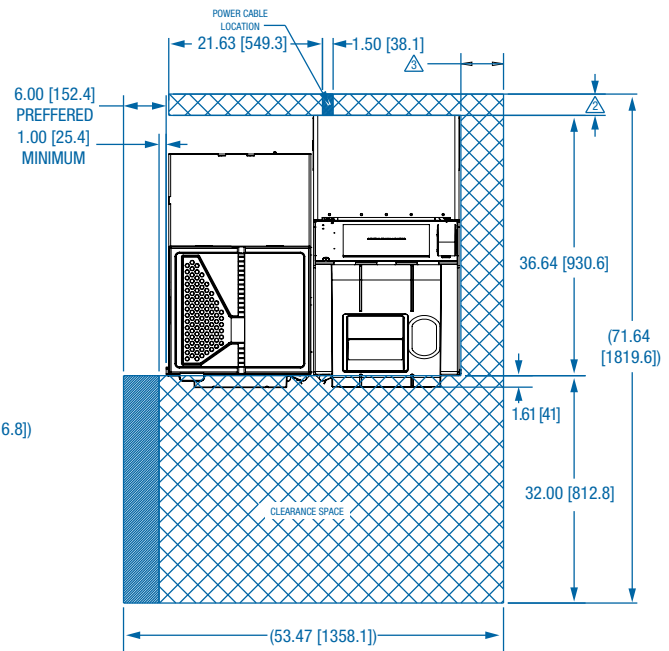
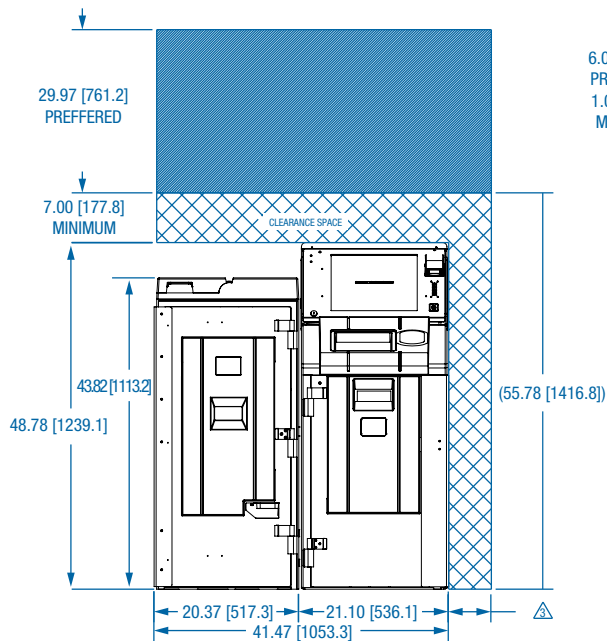
Paragon 3 & 4 Cup/Till Capacity by Denomination (maximum):	USD	CAD
Pennies	200	N/A
Nickels	120	120
Dimes	250	250
Quarters	100	100
50 Cent Piece	N/A	N/A
\$1 Dollars	N/A	60
\$2 Dollars	N/A	60
Total Cup/Till Capacity	670	590

GLORY

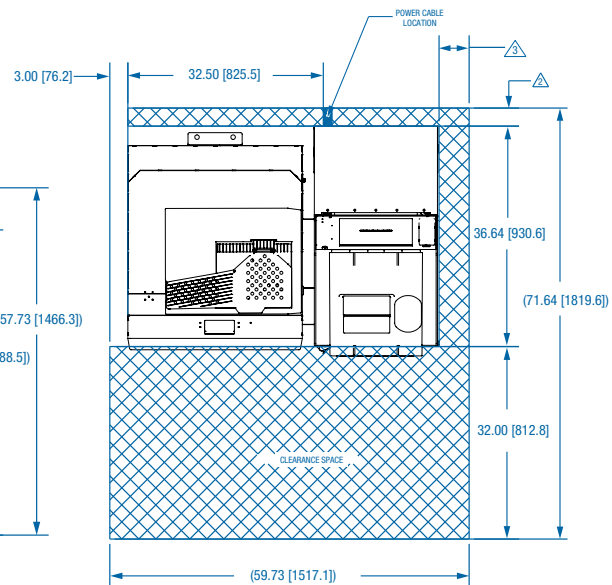
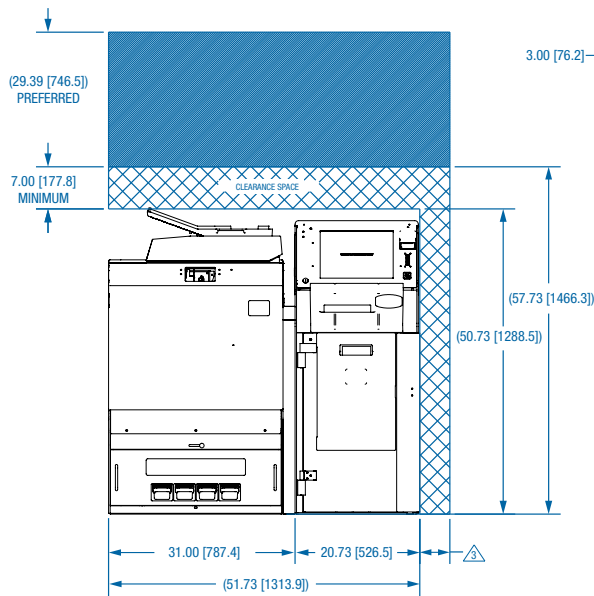
**Revolution**  
Retail Systems

# PARAGON™ SERIES

## PARAGON 3SE / PARAGON 4SE



## PARAGON 3LW / PARAGON 4LW



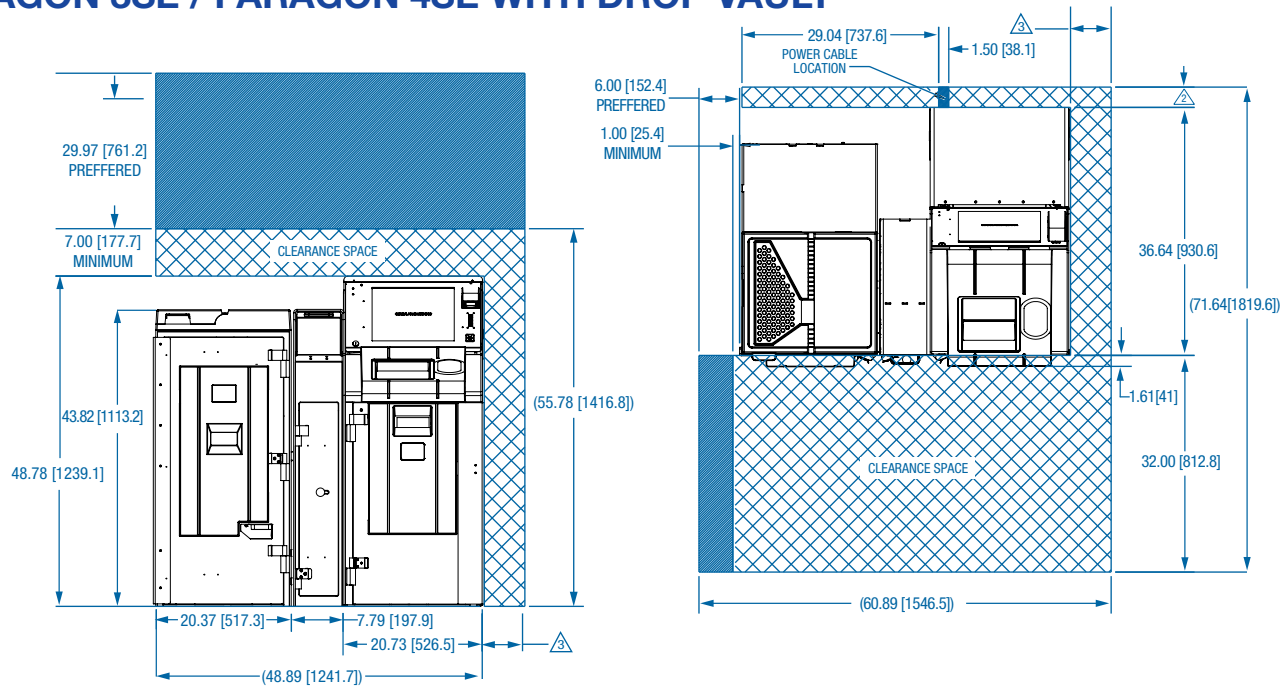
- 1 SYSTEM MUST BE SECURED TO LEVEL FLOOR.
- 2 IF THE A/C OUTLET IS NOT LOCATED IN THE INDICATED AREA BEHIND THE UNIT, THIS DIMENSION TO BE A MINIMUM OF 3".  
IF THE A/C OUTLET IS LOCATED IN THE INDICATED AREA BEHIND THE UNIT, THIS DIMENSION TO BE A MINIMUM OF 5".
- 3 IF UPS/AC DISTRIBUTION BOX POWER SWITCH IS ON THE LEFT SIDE OF THE MACHINE, THIS DIMENSION CAN BE MINIMUM 1.00 [25.4]  
OTHERWISE THIS DIMENSION IS MINIMUM 6.00 [154.2].

GLORY

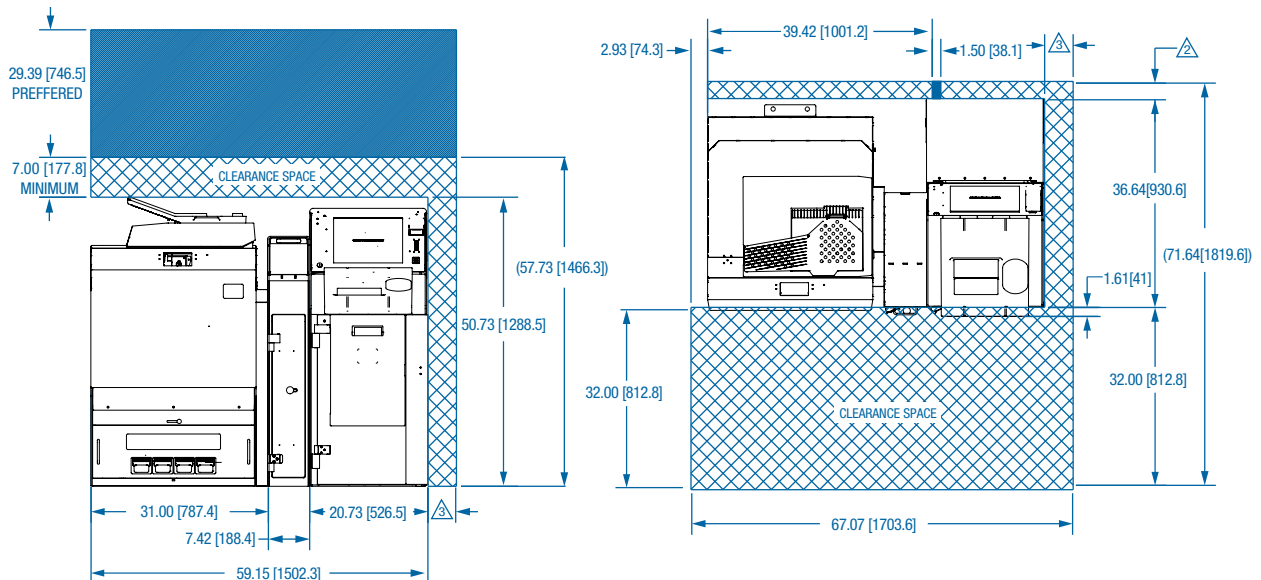
Revolution  
Retail Systems

# PARAGON™ SERIES

## PARAGON 3SE / PARAGON 4SE WITH DROP VAULT



## PARAGON 3LW / PARAGON 4LW WITH DROP VAULT



- 1 SYSTEM MUST BE SECURED TO LEVEL FLOOR.
- 2 IF THE A/C OUTLET IS NOT LOCATED IN THE INDICATED AREA BEHIND THE UNIT, THIS DIMENSION TO BE A MINIMUM OF 3".  
IF THE A/C OUTLET IS LOCATED IN THE INDICATED AREA BEHIND THE UNIT, THIS DIMENSION TO BE A MINIMUM OF 5".
- 3 IF UPS/AC DISTRIBUTION BOX POWER SWITCH IS ON THE LEFT SIDE OF THE MACHINE, THIS DIMENSION CAN BE MINIMUM 1.00 [25.4]  
OTHERWISE THIS DIMENSION IS MINIMUM 6.00 [154.2].

GLORY

Revolution  
Retail Systems