

Revolution Retail Systems

FORTIS™ SERIES



Fortis 4SE/5SE Dual - 4LW/5LW Dual



Fortis 4SE/5SE Dual



Fortis 4LW/5LW Dual

HARDWARE FEATURES:

- Closed Loop Architecture of Notes and Coins; No Manual Intervention Required
- Continuous 24/7 Monitoring
- Audit Cassette Allowing Automatic Internal Validation of Any Recycling Cassette
- Lockable Large-Capacity Deposit Cassette Accepting Up to 7,200 Notes
- “Fitness Sort” on Recycled Notes
- Two Roll Storages with Capacity Up to 250 Notes Each to Hold Escrow and Rejected Notes, Respectively
- Pocket Note Acceptor Handles Large Bundles of Notes (Up to 250 Notes)
- Flexible Note Orientation (No Need to Separate or Face Notes)
- Scalable – Cluster Format – Up to Two (2) Note Recyclers in Dual Configurations
- Coin Discrimination (i.e. Counterfeit Coin Rejection)
- Dispenses Coins Directly into Till Tray – Fortis 4SE & 5SE
- Dispenses Coins Directly into Till Drawer – Fortis 4LW & 5LW
- Coin Cup LEDs (Notification if Change is Left in Cups)
- Integrated Printer
- Optional Integrated Biometrics (Fingerprint Reader)
- Optional Integrated Barcode Scanner for Till Check In/Out
- Optional Integrated Drop/Storage Vault
- Uninterruptible Power Supply

SOFTWARE FEATURES:

- PCI Compliant
- REACH™ Remote Monitoring and Management
- Real Time Cash/Coin Level Monitoring
- Reporting – Standard or Custom
- Lane and/or Clerk Accountability
- Tills and Drop Bags Automatically Traced to a Specific User by Utilizing Bar-Coding
- Multiple Tills per Register/Lane
- Configurable User Permission Levels for Equipment Access
- Multiple User Authentication Schemes (Log-in and PIN, or Biometrics)
- Automatic Prompting of Periodic Password Changes
- Customized Programming of ID Cards
- Track Monies Outside of Unit with External Vault Fund Function
- Guided Deposit Preparation: Automatically Calculates and Moves Deposit to Courier Cassette
- Automatic End of Day Reporting
- Courier Specific Log-In Menu
- Video Troubleshooting Tips
- Video Guidance for System Operation

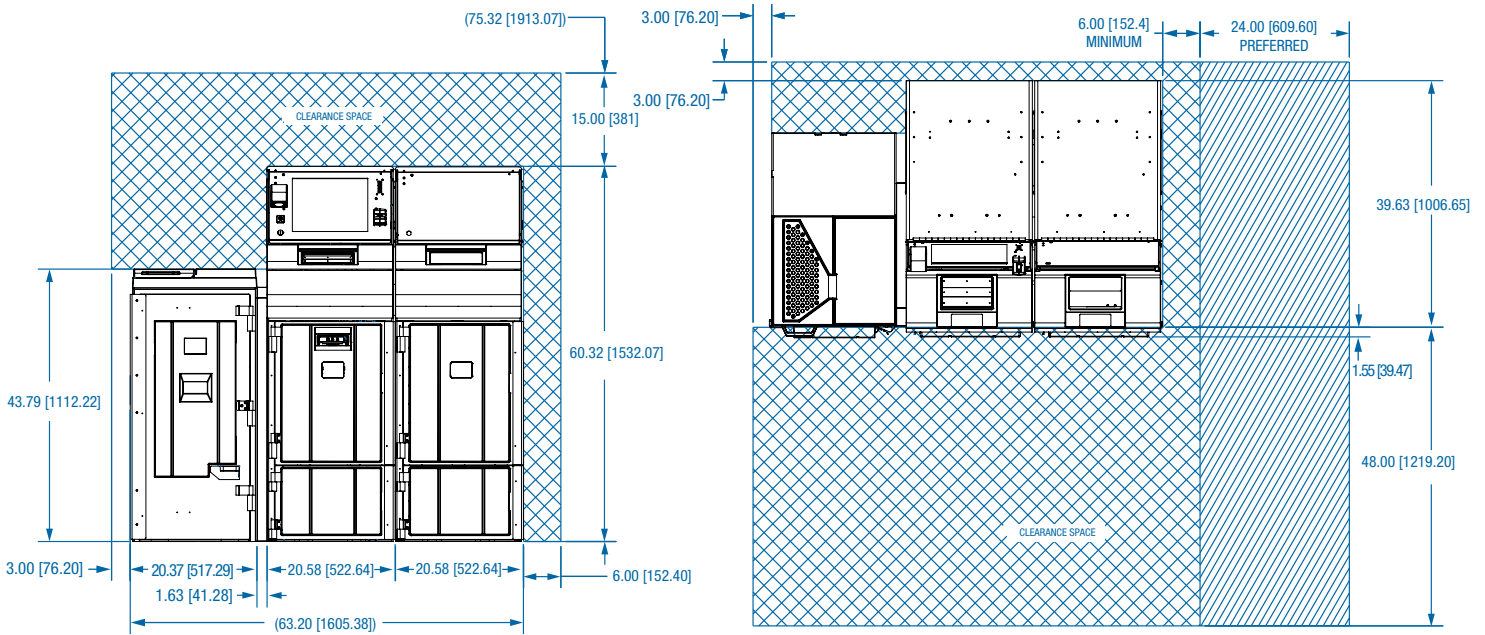
FEATURE CAPABILITY:

- Ability to Integrate with POS System
- Same Day Credit on Deposit (Provisional Credit)

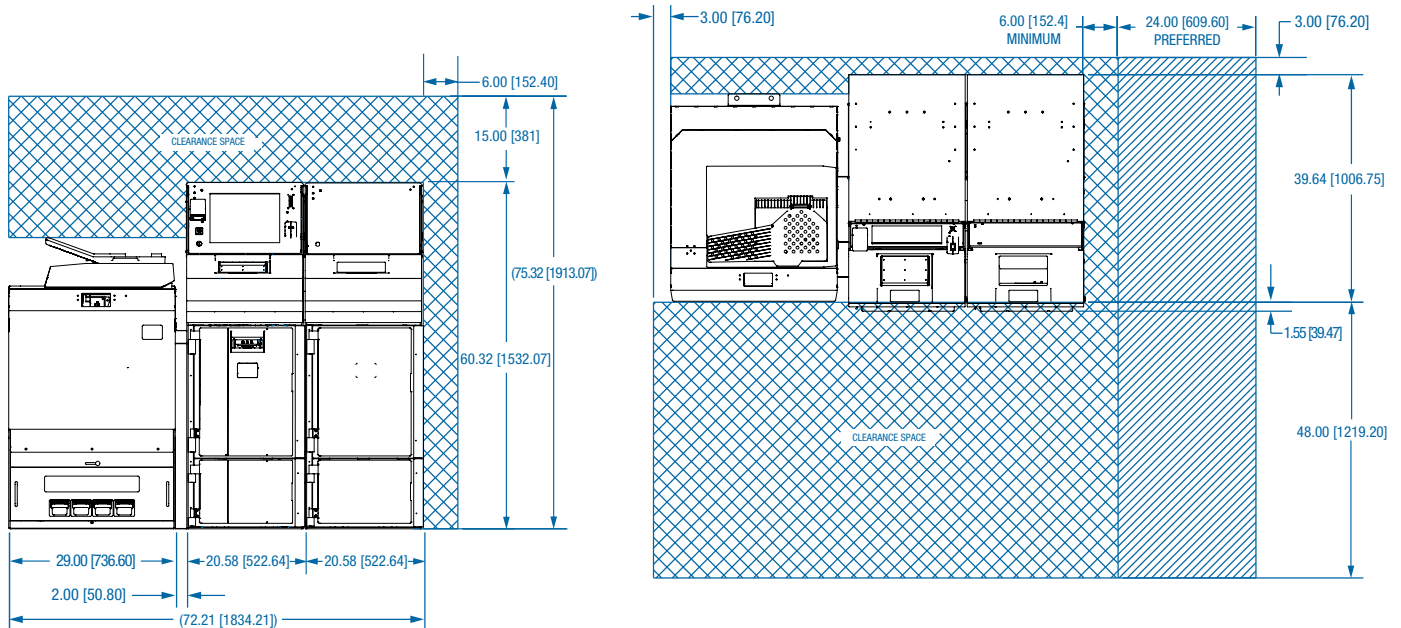
SPECIFICATIONS

Physical Characteristics (nominal):	Fortis 4SE Dual	Fortis 4LW Dual	Fortis 5SE Dual	Fortis 5LW Dual
Height	60.24" (1,530.07 mm)	60.24" (1,530.07 mm)	60.24" (1,530.07 mm)	60.24" (1,530.07 mm)
Width	63.21" (1,605.56 mm)	72.22" (1,834.41 mm)	63.21" (1,605.56 mm)	72.22" (1,834.41 mm)
Depth (install depth)	39.57" (1,005.00 mm)	39.57" (1,005.00 mm)	39.57" (1,005.00 mm)	39.57" (1,005.00 mm)
Weight (empty)	3,400 lbs (1,542 kg)	3,500 lbs (1,588 kg)	3,400 lbs (1,542 kg)	3,500 lbs (1,588 kg)
Device Configuration:				
Number of Recycle Cassettes	8	8	6	6
Number of Small Recycle Cassettes	0	0	4	4
Number of Deposit Cassettes	2	2	2	2
Number of Audit Cassettes	1	1	1	1
Notes:				
Capacity per Cassette (approximate):				
Recycle Cassette	3,000 notes	3,000 notes	3,000 notes	2,700 notes
Small Cassette	800 notes	800 notes	800 notes	800 notes
Deposit Cassette	7,200 notes	7,200 notes	7,200 notes	7,200 notes
Roll Storages (total)	500 notes	500 notes	500 notes	500 notes
Total Capacity of Notes	38,400 notes	38,400 notes	35,600 notes	35,600 notes
Processing Speed In or Out (max)	10 notes/sec	10 notes/sec	10 notes/sec	10 notes/sec
Recycling Capability (max)	(8) denominations	(8) denominations	(10) denominations	(10) denominations
Coin:				
Number of Recycle Modules	4	4	4	4
Capacity by Denomination (maximum):				
• Pennies	4,300	10,000+	4,300	10,000+
• Nickels	2,900	6,000+	2,900	6,000+
• Dimes	6,100	13,500+	6,100	13,500+
• Quarters	2,350	5,000+	2,350	5,000+
• Fifty Cent Piece	20	200	20	200
• Dollar	130	800	130	800
• Sorted Overflow	---	24,000	---	24,000
Total Coin Capacity	15,800	59,500+	15,800	59,500+
Coin Processing Speed In (up to)	700 coin/min	3,000 coin/min	700 coin/min	3,000 coin/min
Coin processing Speed Out (up to)	16 coin/sec	32 coin/sec	16 coin/sec	32 coin/sec
Accepts Up To	(6) denominations	(6) denominations	(6) denominations	(6) denominations
Recycle Up To	(4) denominations	(4) denominations	(4) denominations	(4) denominations

FORTIS 4SE DUAL / FORTIS 5SE DUAL



FORTIS 4LW DUAL / FORTIS 5LW DUAL



- 1 SYSTEM MUST BE SECURED TO LEVEL FLOOR.
- 2 IF THE A/C OUTLET IS NOT LOCATED IN THE INDICATED AREA BEHIND THE UNIT, THIS DIMENSION TO BE A MINIMUM OF 3".
IF THE A/C OUTLET IS LOCATED IN THE INDICATED AREA BEHIND THE UNIT, THIS DIMENSION TO BE A MINIMUM OF 5".
- 3 IF UPS/AC DISTRIBUTION BOX POWER SWITCH IS ON THE LEFT SIDE OF THE MACHINE, THIS DIMENSION CAN BE MINIMUM 1.00 [25.4] OTHERWISE THIS DIMENSION IS MINIMUM 6.00 [154.2].